

SINCE 1972

BEST QUALITY TRACTOR PARTS, AGRICULTURE PARTS,  
TRUCK PARTS, HYDRAULIC PARTS, BICYCLE PARTS  
& CUSTOM COMPONENTS



**MANN International**

*MFRS & Exporter OF : ALL TYPES OF SPARE PARTS*

## COMPANY PROFILE

We The Mann International, are in industry field since 1972. We have four Units at different locations in Ludhiana. We are manufacturing agriculture components ,Tractor & Truck parts and Bicycle Parts. The company is run by technopreneurs who are professionally qualified with rich work experience. The knowledge and the experience gained are reflected in the products we make. We commit to give you the best of our services with our full technical support and efficient manpower.

- 1.) Over 48 Years of Manufacturing experience.
- 2.) Design, Sales, Manufacturing, and Service in One Facility.
- 3.) Precise CNC and accurate precision work.
- 4.) Highest Quality Materials Available.
- 5.) Quality Control and Assurance Guarantees 100% Satisfaction.
- 6.) Components and Products Customized as per Specifications.
- 7.) Competitive Pricing and Timely Deliveries.

PRIDE OF INDIA





**TOP LINK ASSEMBLY (UNC)**



**TOP LINK END (METRIC)**



**TOP LINK LOCKING COLLAR (FORGED)**



**TOP LINK LOCKING COLLAR (PLATE)**



**REPLACEMENT SPARE PARTS (REPLACES CNH)**



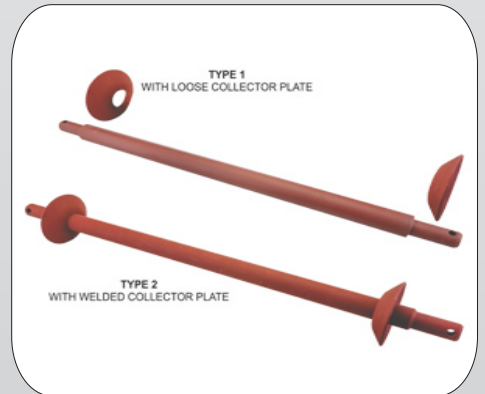
**KNUCKLE END W/O SPINDLE, WITH PIN**



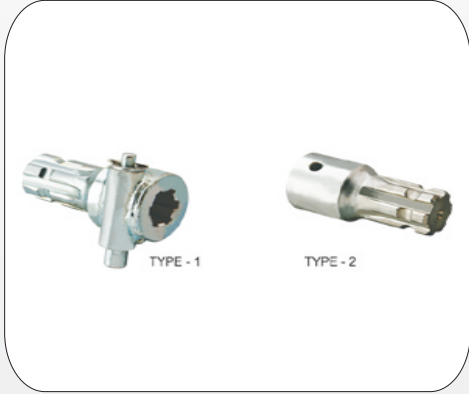
**KNUCKLE END (REPLACES JD 2AL68208)**



**DRAWBAR (CROSS SECTION - 63 X 25MM)**



**ROUND DRAWBAR**



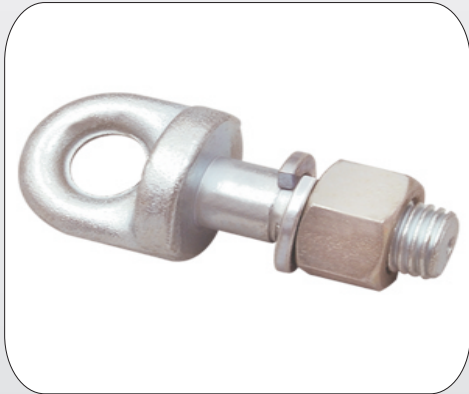
**P.T.O. ADAPTER**



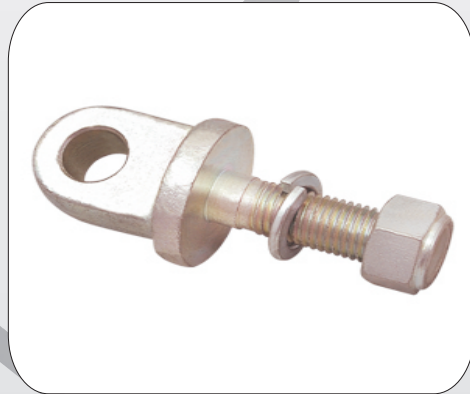
**STABILIZER HEADS**



**STABILIZER HEADS**



**EYE END (TYPE A)**



**EYE END (TYPE-B)**



**FARM CLEVISES**



**CLEVISE PINS (AVAILABLE IN PLAIN FINISH & SILVER FINISH)**



**WELD ON END**



**WELD ON END**



**LEVELLING ARM KIT (KCILAC22)  
(REPLACES CASE)**



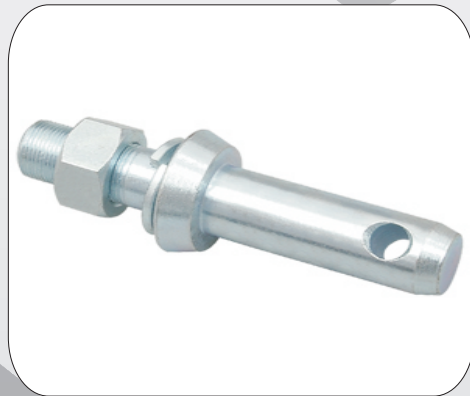
**BALL WITHOUT COLLAR (HEAT TREATED 58-62 HRC-OPTIONAL)**



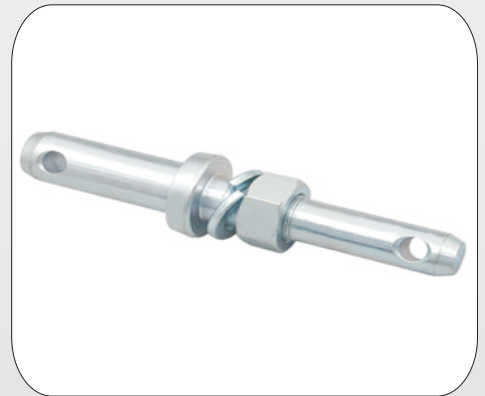
**BALL WITH COLLAR (HEAT TREATED 58-62 HRC-OPTIONAL)**



**BALL WITH CASE  
(REPLACES STEYR)**



**LOWER LINK PIN /  
LIFT ARM PIN**



**DOUBLE MOUNTING PIN /  
IMPLEMENT PIN**



**WELD ON END MOUNTING  
PIN (TYPE- C)**



**HITCH PIN WITH  
LINCH PIN & CHAIN**



**HITCH PIN WITH HAIR  
PIN (OVAL HANDLE)**



# MANN International

MFRS & Exporter OF : ALL TYPES OF SPARE PARTS



**BENT HANDLE HITCH PIN (WITH & WITHOUT LINCH PIN CHAIN)**



**FISH PIN**



**SPECIAL PINS**



**SPECIAL PINS**



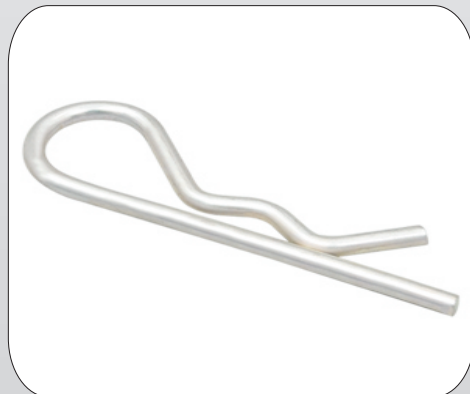
**LINCH PIN**



**BENT HITCH PIN**



**SQUARE HEAD LINCH PIN WITH CHAIN FOR PIPE**



**HAIR PIN**



**SPLIT PIN**



**MANN International**

*MFRS & Exporter Of : ALL TYPES OF SPARE PARTS*



**BUSH (WITH HOLE)**



**BUSH / SLEEVE FOR TINE**



**BLADE BOLT WITH  
NUT & WASHER**



**DISC AXLE**

Address : Works: 250/A, St # 1, Surjit Nagar, Giaspura, Ludhiana.

Phone: +91-98142-03172/+91-98140-03172

Email : [export@manninternational.in](mailto:export@manninternational.in) | Web : [www.manninternational.in](http://www.manninternational.in)